



Appendix A. I-5 Rose Quarter Access Management Summary

Figure descriptions for the images in this appendix have been provided as alternative text usable by accessibility software. If needed, additional figure interpretation for this appendix is available from the ODOT Senior Environmental Project Manager at (503) 731-4804.

Memo

Date: Friday, March 23, 2018

Project: URS ODOT I-5 Rose Quarter

To: John Cullerton, Parametrix

From: Beth Wemple, Camille Alexander, HDR

Subject: **I-5 Rose Quarter Access Management Summary**

Introduction

As a part of the I-5 Rose Quarter Improvement project Environmental Assessment (EA), the project team has evaluated potential impacts to access locations in the project study area resulting from implementation of the build alternative. Those evaluations are outlined in the figures and tables below; including the locations and spacing of driveways, intersections, and interchanges in the I-5 Rose Quarter study area.

Figure 1 displays the overall study area, Figure 2 thru 20 and supporting tables showing the details of the access type, spacing and status. Table 40 and Table 41 show the interchange spacing in the study area.

Methodology

Access management is defined by the Federal Highway Administration (FHWA) as “the proactive management of vehicular access points to land parcels adjacent to all manner of roadways”.¹ Access points may include driveways, intersections and ramps.

Listed below are the sources and definitions used in each table:

- Online aerial imagery was used to verify locations of intersections and driveways.
- Property lines were identified using the tax lot layers provided in Metro’s MetroMap database.
- Individual driveways, intersections and interchanges and the distance between each was measured using Google Earth.

The summary tables were developed by giving each access point a unique number identifying the following information:

- Type: identifying the location as an intersection or driveway.
- Distance (feet) to adjacent intersection, driveway or interchange.
- Status: Closed, modified or no change. Status information was confirmed by Oregon Department of Transportation.
 - Closed – Approach location likely closed due to direct physical or operational impacts as a part of or at the same time as the project is implemented.

¹ https://ops.fhwa.dot.gov/access_mgmt/what_is_accsmgmt.htm

- Modified – Approach is likely to be modified, but remain open. This could include modifications to the exact location, turn movement restrictions, and width.
- No change – Approach is likely to be replaced in kind or not affected.
- Impacted by Proposed Concept: yes/no the proposed improvements will/will not impact the access points.

Findings

- There are currently 132 access points (37 intersections and 95 driveways) within the study area.
- The majority of access points are business driveways and most of these (60 percent) are located on N Weidler St, and N Broadway.
- There are currently thirteen driveways which may be closed with redevelopment of properties and are identified in Table 1. These are shown in more detail in Tables 4,5,28 and 32-36.
- There are currently five driveways and nine intersections that will be modified with the proposed concept and one intersection is expected to close and are identified in Table 1. These are shown in more detail in Tables 2-5, 12,13, 28 and 33-36.

Table 1. Total Accesses to be modified and/or closed

Status	Driveways	Intersections
No Change	77	28
Modified	5	9
Closed	13	0
TOTAL	95	37

Figure 1. I-5 Rose Quarter Study Area

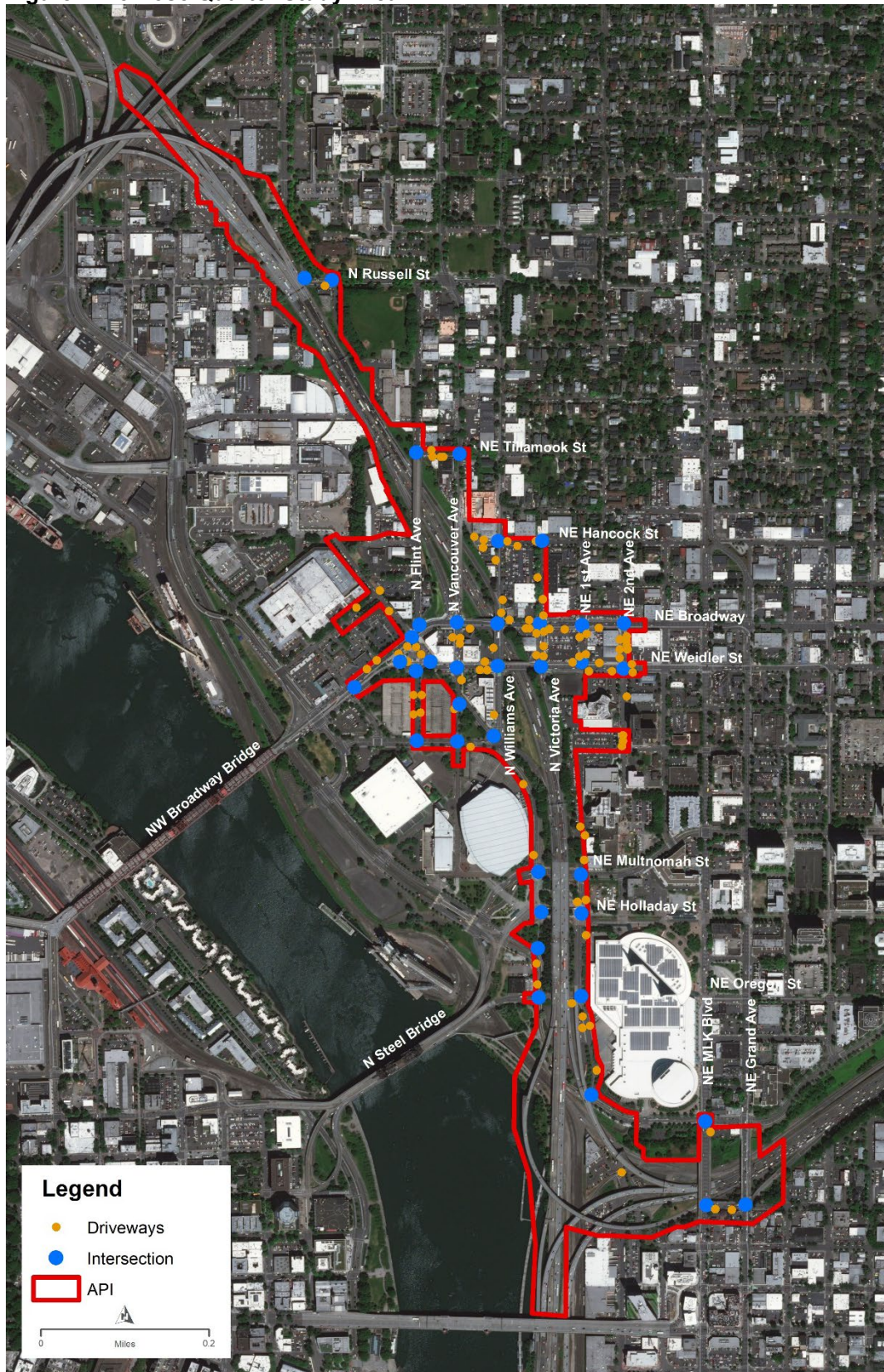


Figure 2.NE Weidler St. Access



Table 2. Northside NE Weidler St

From			To			Distance Status		Affect of Proposed Concept
From ID #	Distance from	Type	To ID #	Distance to	Type	Approximate Distance	Status	
1	205 NE driveway	Driveway	501	NE 2nd Ave	Intersection	35 ft	No change	No
501	NE 2nd Ave Intersection	Intersection	2	119 NE Weidler	Driveway	108 ft	No change	No
2	119 NE Weidler	Driveway	502	NE 1st Ave	Intersection	64 ft	No change	No
502	NE Weidler/ NE 1st Ave	Intersection	3	101 NE Weidler	Driveway	15 ft	No change	No
3	101 NE Weidler	Driveway	503	NE Victoria Ave	Intersection/ramp	155 ft	No change	No
503	NE Victoria Ave	Intersection/ramp	504	NE Williams Ave	Intersection	220 ft	Modified	To be modified and constructed
504	NE Williams Ave	Intersection	67	1 NE Weidler	Driveway	65 ft	Modified	To be modified and constructed
67	1 NE Weidler	Driveway	505	N Vancouver Ave	Intersection	125 ft	No change	No
505	N Vancouver Ave	Intersection	506	N Wheeler Ave	Intersection	100 ft	Modified	To be modified and constructed
506	N Wheeler Ave	Intersection	4	269 N Weidler St	Driveway	105 ft	No change	No
4	269 N Weidler St	Driveway	508	N Broadway	Intersection	15 ft	No change	No
508	N Broadway	Intersection	509	N Benton Ave	Intersection	334 ft	No change	No

Table 3.Southside NE Weidler St

From			To			Distance Status		Affect of Proposed Concept
From ID #	Distance from	Type	To ID #	Distance to	Type	Approximate Distance	Status	
6	205 NE driveway	Driveway	501	NE 2nd Ave Intersection	Intersection	32 ft	No change	No
501	NE 2nd Ave Intersection	Intersection	7	117 NE Weidler	Driveway	36 ft	No change	No
7	117 NE Weidler	Driveway	8	101 NE Weidler	Driveway	158 ft	No change	No
8	1441 NE 2 nd Ave (with Weidler access)	Driveway	503	NE Victoria Ave	Intersection/ramp	210 ft	No change	No
503	NE Victoria Ave	Intersection/ramp	504	N Williams Ave	Intersection	210 ft	No change	No
504	N Williams Ave	Intersection	9	1 NE Weidler (housing entrance)	Driveway	40 ft	Modified	To be modified and constructed
9	1 NE Weidler (housing entrance)	Driveway	63	1 NE Weidler (housing parking)	Driveway	25 ft	No change	No
63	1 NE Weidler (housing parking)	Driveway	505	N Vancouver Ave	Intersection	115 ft	No change	No
505	N Vancouver Ave	Intersection	507	N Flint Ave	Intersection	198 ft	No change	No
507	N Flint Ave	Intersection	509	N Benton Ave	Intersection	393 ft	No change	No

Figure 3.N Broadway St



Table 4. Northside N Broadway St

From			To			Distance Status		Affect of Proposed Concept
From ID #	Distance from	Type	To ID #	Distance to	Type	Approximate Distance	Status	
510	NE 2nd Ave	Intersection	511	NE 1st Ave	Intersection	220 ft	No change	No
511	NE 1st Ave	Intersection	512	NE Victoria Ave	Intersection	224 ft	No change	No
512	NE Victoria Ave	Intersection	10	30 NE Broadway	Driveway	20 ft	Modified	To be modified and constructed
10	30 NE Broadway	Driveway	11	2 NE Broadway	Driveway	85 ft	Closed	proposed closure with redevelopment or with project implementation
11	2 NE Broadway	Driveway	513	N Williams Ave	Intersection	33 ft	Closed	proposed closure with redevelopment or with project implementation
513	N Williams Ave	Intersection	514	N Vancouver Ave	Intersection	211 ft	Modified	To be modified and constructed
514	N Vancouver Ave	Intersection	515	N Flint Ave	Intersection	156 ft	No change	No
515	N Flint Ave	Intersection	516	N Wheeler Ave	Intersection	44 ft	No change	No
516	N Wheeler Ave	Intersection	12	N Ross Ave	Driveway	225 ft	No change	No
12	N Ross Ave	Driveway	13	299 NE	Driveway	48 ft	No change	No
13	299 NE	Driveway	509	Benton Ave	Intersection	155 ft	No change	No

Table 5.Southside N Broadway St

From			To			Distance Status		Affect of Proposed Concept
From ID #	Distance from	Type	To ID #	Distance to	Type	Approximate Distance	Status	
510	NE 2nd Ave	Intersection	14	Car Lot	Driveway	115 ft	No change	No
14	Car Lot	Driveway	511	NE 1st Ave	Intersection	64 ft	No change	No
511	NE 1st Ave	Intersection	15	55 Broadway	Driveway	61 ft	No change	No
15	55 Broadway	Driveway	16	51 Broadway	Driveway	57 ft	No change	No
16	51 Broadway	Driveway	512	Victoria	Intersection	8 ft	No change	No
512	Victoria	Intersection	17	30 Broadway	Driveway	40 ft	Modified	To be modified and constructed
17	30 Broadway	Driveway	18	31 Broadway	Driveway	8 ft	Closed	proposed closure with redevelopment or with project implementation
18	31 Broadway	Driveway	513	N Williams Ave	Intersection	130 ft	Closed	proposed closure with redevelopment or with project implementation
513	N Williams Ave	Intersection	19	198 Broadway	Driveway	140 ft	Modified	To be modified and constructed
19	198 Broadway	Driveway	514	N Vancouver Ave	Intersection	32 ft	Modified	To be modified and constructed
514	N Vancouver Ave	Intersection	516	N Wheeler	Intersection	270 ft	No change	No
516	Wheeler	Intersection	20	263 Broadway	Driveway	32 ft	No change	No
20	263 Broadway	Driveway	21	approx 270 right turn lane	Intersection	37 ft	No change	No
21	Approx. 270 right turn lane	Intersection	509	N Benton Ave	Intersection	345 ft	No change	No

Figure 4.N Hancock St



Table 6. Northside N Hancock St

From			To			Distance Status		Affect of Proposed Concept
From ID #	Distance from	Type	To ID #	Distance to	Type	Approximate Distance	Status	
517	NE Victoria Ave	Intersection	24	25 Hancock St	Driveway	11 ft	No change	No
24	25 Hancock St	Driveway	25	5 Hancock St	Driveway	135 ft	No change	No
25	5 Hancock St	Driveway	518	N Williams Ave	Intersection	33 ft	No change	No
518	N Williams Ave	Intersection	69	11 Hancock	Driveway	60 ft	No change	No
69	11 Hancock	Driveway	26	11 Hancock	Driveway	20 ft	No change	No

Table 7. Southside N Hancock St

From			To			Distance Status		Affect of Proposed Concept
From ID #	Distance from	Type	To ID #	Distance to	Type	Approximate Distance	Status	
517	NE Victoria Ave	Intersection	68	11NE Hancock St	Driveway	126 ft	No change	No
68	11NE Hancock St	Driveway	518	N Williams Ave	Intersection	63 ft	No change	No
518	N Williams Ave	Intersection	27	11 Hancock	Driveway	66 ft	No change	No

Figure 5. N Tillamook St



Table 8. Northside N Tillamook St

From			To			Distance Status		Affect of Proposed Concept
From ID #	Distance from	Type	To ID #	Distance to	Type	Approximate Distance	Status	
519	N Vancouver Ave	Intersection	73	Tillamook St	Driveway	135 ft	No change	No
73	231 Tillamook St	Driveway	520	N Tillamook St	Intersection	58 ft	No change	No

Table 9. Southside N Tillamook St

From			To			Distance Status		Affect of Proposed Concept
From ID #	Distance from	Type	To ID #	Distance to	Type	Approximate Distance	Status	
519	N Vancouver Ave	Intersection	72	201 Tillamook St	Driveway	71 ft	No change	No
72	201 Tillamook St	Driveway	71	231 Tillamook St	Driveway	4 ft	No change	No
71	231 Tillamook St	Driveway	70	231 Tillamook St	Driveway	39 ft	No change	No
70	231 Tillamook St	Driveway	520	N Flint Ave	Intersection	50 ft	No change	No

Figure 6. N Russell St



Table 10. Northside N Russell St

From			To			Distance Status		Affect of Proposed Concept
From ID #	Distance from	Type	To ID #	Distance to	Type	Approximate Distance	Status	
521	N Commercial Ave	Intersection	522	N Knott St	Intersection	155 ft	No change	No

Table 11. Southside N Russell St

From			To			Distance Status		Affect of Proposed Concept
From ID #	Distance from	Type	To ID #	Distance to	Type	Approximate Distance	Status	
521	N Commercial Ave	Intersection	74	529 Russell St	Driveway	24 ft	No change	No
74	529 Russell St	Driveway	522	N Knott St	Intersection	93 ft	No change	No

Figure 7. N Winning Way



Table 12. Northside N Winning Way

From			To			Distance Status		Affect of Proposed Concept
From ID #	Distance from	Type	To ID #	Distance to	Type	Approximate Distance	Status	
523	Wheeler Ave	Intersection	524	N Center Ct St	Intersection	158 ft	Modified	To be modified and constructed with removal of entrance ramp to I-5.
524	N Center Ct St	Intersection	525	N Flint St	Intersection	217 ft	Modified	To be modified and constructed

Table 13. Southside N Winning Way

From			To			Distance Status		Affect of Proposed Concept
From ID #	Distance from	Type	To ID #	Distance to	Type	Approximate Distance	Status	
523	Wheeler Ave	Intersection	28	199 N Winning Way/parking entrance	Driveway	82 ft	Modified	To be modified and constructed
28	199 N Winning Way/parking entrance	Driveway	524	N Center Ct St	Intersection	46 ft	Modified	To be modified and constructed
524	N Center Ct St	Intersection	525	N Flint St	Intersection	200 ft	Modified	To be modified and constructed

Figure 8. Multnomah St



Table 14. Northside N Multnomah St

From			To			Distance Status		Affect of Proposed Concept
From ID #	Distance from	Type	To ID #	Distance to	Type	Approximate Distance	Status	
526	NE 1st Ave	Intersection	527	NE Wheeler Ave	Intersection	232 ft	No change	No

Table 15. Southside N Multnomah St

From			To			Distance Status		Affect of Proposed Concept
From ID #	Distance from	Type	To ID #	Distance to	Type	Approximate Distance	Status	
526	NE 1st Ave	Intersection	527	NE Wheeler Ave	Intersection	232 ft	No change	No

Figure 9. Holladay St



Table 16. Northside N Holladay St

From			To			Distance Status		Affect of Proposed Concept
From ID #	Distance from	Type	To ID #	Distance to	Type	Approximate Distance	Status	
528	NE 1st Ave	Intersection	529	NE Wheeler Ave	Intersection	210 ft	No change	No

Table 17. Southside N Holladay St

From			To			Distance Status		Affect of Proposed Concept
From ID #	Distance from	Type	To ID #	Distance to	Type	Approximate Distance	Status	
528	NE 1st Ave	Intersection	529	NE Wheeler Ave	Intersection	210 ft	No change	No

Figure 10. NE Oregon St



Table 18. Northside NE Oregon Ave

From			To			Distance Status		Affect of Proposed Concept
From ID #	Distance from	Type	To ID #	Distance to	Type	Approximate Distance	Status	
530	NE 1st Ave	Intersection	531	NE Lloyd Blvd	Intersection	225 ft	No change	No

Table 19. Southside NE Oregon Ave

From			To			Distance Status		Affect of Proposed Concept
From ID #	Distance from	Type	To ID #	Distance to	Type	Approximate Distance	Status	
530	NE 1st Ave	Intersection	75	62 NE Oregon St	Driveway	44 ft	No change	No
75	62 NE Oregon St	Driveway	531	NE Lloyd Blvd	Intersection	161 ft	No change	No

Figure 11. NE Lloyd Blvd

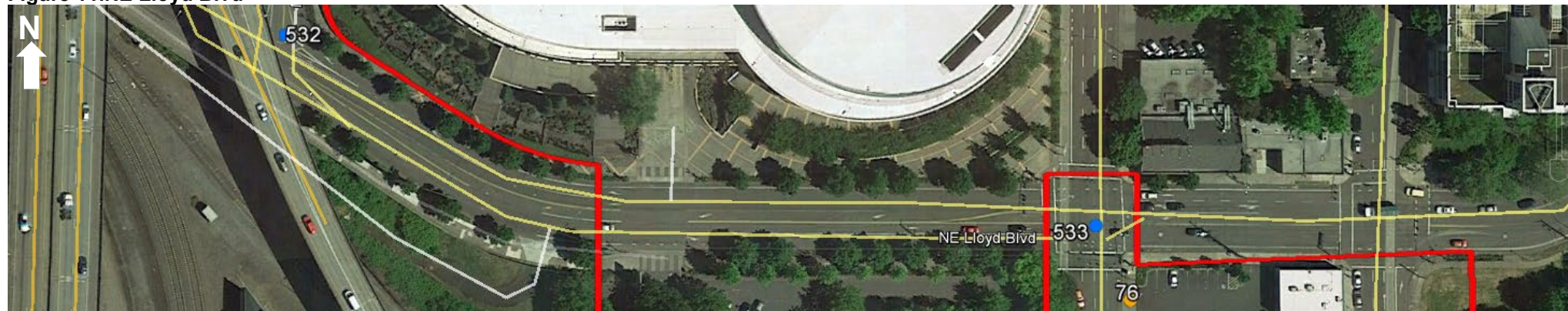


Table 20. Northside NE Lloyd Blvd

From			To			Distance Status		Affect of Proposed Concept
From ID #	Distance from	Type	To ID #	Distance to	Type	Approximate Distance	Status	
532	NE 1st Ave	Intersection	533	NE MLK Ave	Intersection	685 ft	No change	No

Table 21. Southside NE Lloyd Blvd

From			To			Distance Status		Affect of Proposed Concept
From ID #	Distance from	Type	To ID #	Distance to	Type	Approximate Distance	Status	
532	NE 1st Ave	Intersection	76	490 NE MLK Dr	Driveway	685 ft	No change	No
76	490 NE MLK Dr	Driveway	533	NE MLK Ave	Intersection	22 ft	No change	No

Figure 12. NE Everett St



Table 22. Northside NE Everett St

From			To			Distance Status		Affect of Proposed Concept
From ID #	Distance from	Type	To ID #	Distance to	Type	Approximate Distance	Status	
534	NE Grand Ave	Intersection	535	NE MLK Blvd	Intersection	199 ft	No change	No

Table 23. Southside NE Everett St

From			To			Distance Status		Affect of Proposed Concept
From ID #	Distance from	Type	To ID #	Distance to	Type	Approximate Distance	Status	
534	NE Grand Ave	Intersection	77	499 NE Everett St	Driveway	33 ft	No change	No
77	499 NE Everett St	Driveway	78	401 NE Everett St	Driveway	65 ft	No change	No
78	401 NE Everett St	Driveway	535	NE MLK Blvd	Intersection	15 ft	No change	No

Figure 13. NE Grand Ave



Table 24. Eastside NE Grand Ave

From			To			Distance Status		Affect of Proposed Concept
From ID #	Distance from	Type	To ID #	Distance to	Type	Approximate Distance	Status	
534	NE Everett St	Intersection	Outside study area	NE Lloyd Blvd	Intersection	450 ft	No change	No

Table 25. Westside NE Grand Ave

From			To			Distance Status		Affect of Proposed Concept
From ID #	Distance from	Type	To ID #	Distance to	Type	Approximate Distance	Status	
534	NE Everett St	Intersection	Outside study area	NE Lloyd Blvd	Intersection	450 ft	No change	No

Figure 14. NE MLK Blvd



Table 26. Eastside NE MLK Blvd

From			To			Distance Status		Affect of Proposed Concept
From ID #	Distance from	Type	To ID #	Distance to	Type	Approximate Distance	Status	
535	NE Everette St	Intersection	76	490 MLK Dr	Driveway	24 ft	No change	No
76	490 MLK Dr	Driveway	533	NE Lloyd Ave	Intersection	414 ft	No change	No

Table 27. Westside NE MLK Blvd

From			To			Distance Status		Affect of Proposed Concept
From ID #	Distance from	Type	To ID #	Distance to	Type	Approximate Distance	Status	
535	NE Everette St	Intersection	533	NE Lloyd Ave	Intersection	485 ft	No change	No

Figure 15. NE 2nd Ave



Table 28. Eastside NE 2nd Ave

From			To			Distance Status		Affect of Proposed Concept
From ID #	Distance from	Type	To ID #	Distance to	Type	Approximate Distance	Status	
29	UP driveway	Driveway	NA	Outside study area	-	0	No change	No
550	NE Clackamas St	Intersection	30	1401 (entrance) NE 2nd Ave	Driveway	38 ft	No change	No
30	1401 (entrance) NE 2nd Ave	Driveway	31	1401 (exit) NE 2nd Ave	Driveway	22 ft	No change	No
31	1401 (exit) NE 2nd Ave	Driveway	32	Shilo inn entrance	Driveway	140 ft	No change	No
32	Shilo inn entrance	Driveway	501	NE Weidler	Intersection	205 ft	No change	No
501	NE Weidler	Intersection	33	1607 NE 2nd Ave	Driveway	85 ft	No change	No
33	1607 NE 2nd Ave	Driveway	34	1609 NE 2nd Ave	Driveway	4 ft	No change	No
34	1609 NE 2nd Ave	Driveway	35	1625 NE 2nd Ave	Driveway	4ft	No change	No
35	1625 NE 2nd Ave	Driveway	36	1625 NE 2nd Ave(north)	Driveway	4ft	No change	No
36	1625 NE 2nd Ave(north)	Driveway	510	NE Broadway	Intersection	50 ft	No change	No

Table 29. Westside NE 2nd Ave

From			To			Distance Status		Affect of Proposed Concept
From ID #	Distance from	Type	To ID #	Distance to	Type	Approximate Distance	Status	
62	1399 NE/ NE 2nd Ave	Driveway	501	NE Weidler	Intersection	450 ft	No change	No
501	NE Weidler	Intersection	37	1607 NE 2nd Ave	Driveway	21 ft	No change	No
37	1607 NE 2nd Ave	Driveway	38	1613 NE 2nd Ave	Driveway	40 ft	No change	No
38	1613 NE 2nd Ave	Driveway	39	1625 NE 2nd Ave	Driveway	13 ft	No change	No
39	1625 NE 2nd Ave	Driveway	510	NE Broadway	Intersection	40 ft	No change	No

Figure 16. NE 1st Ave (North)



Figure 17. NE 1st Ave (South)



Table 30. Eastside NE 1st Ave

From			To			Distance Status		Affect of Proposed Concept
From ID #	Distance from	Type	To ID #	Distance to	Type	Approximate Distance	Status	
532	Lloyd Blvd	Intersection	79	606 1 st Ave	Driveway	119 ft	No change	No
79	606 1 st Ave	Driveway	80	767 1 st Ave	Driveway	146 ft	No change	No
80	767 1 st Ave	Driveway	530	NE Oregon	Intersection	45 ft	No change	No
530	NE Oregon	Intersection	84	998 1 st Ave	Driveway	303 ft	No change	No
84	998 1 st Ave	Driveway	528	NE Holladay St	Intersection	41 ft	No change	No
528	NE Holladay St	Intersection	85	1001 1 st Ave	Driveway	35 ft	No change	No
85	1001 1 st Ave	Driveway	526	NE Multnomah St	Intersection	100 ft	No change	No
526	NE Multnomah St	Intersection	94	1179 NE 1 st Ave	Driveway	47 ft	No change	No
94	1179 NE 1 st Ave	Driveway	95	1299 NE 1 st Ave	Driveway	109 ft	No change	No
95	1299 NE 1 st Ave	Driveway	96	1299 NE 1 st Ave	Driveway	55 ft	No change	No
96	1299 NE 1 st Ave	Driveway	502	NA	Intersection	NA	No change	No
502	NE Weidler St	Intersection	40	1626 NE 1 st Ave	Driveway	27 ft	No change	No
40	1626 NE 1 st Ave	Driveway	41	1658 NE 1 st Ave	Driveway	90 ft	No change	No
41	1658 NE 1 st Ave	Driveway	511	NE Broadway	Intersection	25 ft	No change	No

Table 31. Westside NE 1st Ave

From			To			Distance Status		Affect of Proposed Concept
From ID #	Distance from	Type	To ID #	Distance to	Type	Approximate Distance	Status	
530	NE Oregon	Intersection	528	NE Holladay St	Intersection	433 ft	No change	No
528	NE Holladay St	Intersection	86	1001 NE 1 st St	Driveway	22 ft	No change	No

From			To			Distance Status		Affect of Proposed Concept
From ID #	Distance from	Type	To ID #	Distance to	Type	Approximate Distance	Status	
86	1001 NE 1 st St	Driveway	526	NE Multnomah St	Intersection	135 ft	No change	No
526	NE Multnomah St	Intersection	502	NA	Intersection	NA	NA	No
502	NE Weidler St	Intersection	42	1626 NE 1st Ave	Driveway	44 ft	No change	No
42	1626 NE 1st Ave	Driveway	43	1694 NE 1st Ave	Driveway	65 ft	No change	No
43	1694 NE 1st Ave	Driveway	511	NE Broadway	Intersection	50 ft	No change	No

Figure 18. NE Victoria Ave



Table 32. Eastside NE Victoria Ave

From			To			Distance Status		Affect of Proposed Concept
From ID #	Distance from	Type	To ID #	Distance to	Type	Approximate Distance	Status	
503	NE Weidler St	Intersection	44	1609 NE Victoria Ave	Driveway	25 ft	Modified	To be modified and constructed
44	1609 NE Victoria Ave	Driveway	45	1657 NE Victoria Ave	Driveway	23 ft	Closed	proposed closure with redevelopment or project implementation
45	1657 NE Victoria Ave	Driveway	46	1693 NE Victoria Ave	Driveway	46 ft	Closed	proposed closure with redevelopment or project implementation
46	1693 NE Victoria Ave	Driveway	512	NE Broadway	Intersection	15 ft	Closed	proposed closure with redevelopment or project implementation
512	NE Broadway	Intersection	47	1701 NE	Driveway	26 ft	Modified	To be modified and constructed
47	1701 NE	Driveway	48	1749 NE Victoria Ave	Driveway	100 ft	No change	No
48	1749 NE Victoria Ave	Driveway	517	NE Hancock St	Intersection	265 ft	No change	No

Table 33. Westside NE Victoria Ave

From			To			Distance Status		Affect of Proposed Concept
From ID #	Distance from	Type	To ID #	Distance to	Type	Approximate Distance	Status	
503	NE Weidler St	Intersection	49	1657 NE Victoria Ave	Driveway	32 ft	Modified	To be modified and constructed
49	1657 NE Victoria Ave	Driveway	50	1693 NE Victoria Ave	Driveway	135 ft	Closed	proposed closure with redevelopment or with project implementation
50	1693 NE Victoria Ave	Driveway	512	NE Broadway	Intersection	11 ft	Closed	proposed closure with redevelopment or with project implementation
512	NE Broadway	Intersection	51	1817 NE Victoria Ave	Driveway	252 ft	Modified	To be modified and constructed
51	1817 NE Victoria Ave	Driveway	517	NE Hancock St	Intersection	180 ft	No change	No

Figure 19. NE Lloyd/Wheeler/Williams Ave (South section)



Figure 20. NE Lloyd/Wheeler/Williams Ave (North section)



Table 34. Eastside NE Lloyd/Wheeler/Williams Ave

From			To			Distance Status		Affect of Proposed Concept
From ID #	Distance from	Type	To ID #	Distance to	Type	Approximate Distance	Status	
531	NE Oregon St	Intersection	536	N Interstate Ave	Intersection	260 ft	No change	No
536	N Interstate Ave	Intersection	529	NE Holladay St	Intersection	205 ft	No change	No
529	NE Holladay St	Intersection	527	NE Multnomah St	Intersection	175 ft	No change	No
527	NE Multnomah St	Intersection	523	N Winning Way	Intersection	827 ft	No change	No
523	N Winning Way	Intersection	504	N Weidler St	Intersection	425 ft	Modified	To be modified and constructed
504	N Weidler St	Intersection	513	N Broadway	Intersection	215 ft	Modified	To be modified and constructed
513	N Broadway	Intersection	52	1740 Williams	Driveway	45 ft	Modified	To be modified and constructed
52	1740 Williams	Driveway	91	1740 Williams Ave	Driveway	91 ft	Closed	proposed closure with redevelopment or with project implementation
91	1740 Williams Ave	Driveway	518	N Hancock St	Intersection	311 ft	No change	No
506	N Weidler St	Intersection	516	N Broadway	Intersection	195 ft	No change	No

Table 35. Westside NE Lloyd/Wheeler/Williams Ave

From			To			Distance Status		Affect of Proposed Concept
From ID #	Distance from	Type	To ID #	Distance to	Type	Approximate Distance	Status	
531	NE Oregon St	Intersection	87	800 Interstate	Driveway	51 ft	No change	No
87	800 Interstate	Driveway	88	848 Interstate	Driveway	43 ft	No change	No
88	848 Interstate	Driveway	536	N Interstate Ave	Intersection	19 ft	No change	No
536	N Interstate Ave	Intersection	529	NE Holladay St	Intersection	140 ft	No change	No
529	N Holladay St	Intersection	527	NE Multnomah St	Intersection	150 ft	No change	No
527	NE Multnomah St	Intersection	89	1101 Interstate	Driveway	46 ft	No change	No
89	1101 Interstate	Driveway	90	1247 Interstate	Driveway	396 ft	No change	No
90	1247 Interstate	Driveway	523	N Winning Way	Intersection	239 ft	No change	No
523	N Winning Way	Intersection	53	1544 Williams Ave	Driveway	72 ft	No change	No
53	1544 Williams Ave	Driveway	504	N Weidler St	Intersection	285 ft	No change	No
504	N Weidler St	Intersection	54	1753 Williams	Driveway	74 ft	Modified	To be modified and constructed
54	1753 Williams	Driveway	513	N Broadway	Intersection	102 ft	Closed	proposed closure with redevelopment or with project implementation
513	N Broadway	Intersection	55	1898 Williams	Driveway	197 ft	Modified	To be modified and constructed
55	1898 Williams	Driveway	518	N Hancock St	Intersection	67 ft	No change	No
506	N Weidler St	Intersection	60	Parking Driveway 1	Driveway	76 ft	No change	No
60	Parking Driveway 1	Driveway	61	Parking Driveway 2	Driveway	60 ft	No change	No
61	Parking Driveway 2	Driveway	516	N Broadway	Intersection	65 ft	No change	No
99	1759 N Wheeler Pl	Driveway	97	1798 N Wheeler Pl	Driveway	129 ft	No change	No
97	1798 N Wheeler Pl	Driveway	98	298 N Dixon St	Driveway	118 ft	No change	No

Figure 21. N Center Street/ Vancouver Ave

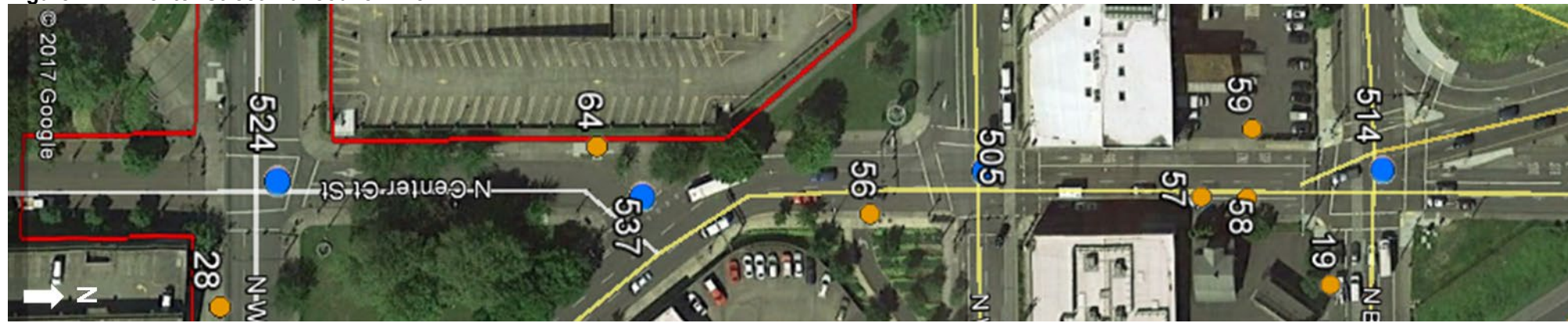


Table 36. Eastside N Center Street/Vancouver Ave

From			To			Distance Status		Affect of Proposed Concept
From ID #	Distance from	Type	To ID #	Distance to	Type	Approximate Distance	Status	
524	N Winning Way	Intersection	537	NE Wheeler Ave	Intersection	170 ft	Modified	To be modified and constructed
537	1501 Vancouver Ave	Intersection	56	Parking Exit	Driveway	125 ft	No change	No
56	1501 Vancouver Ave	Driveway	505	N Weidler St	Intersection	55 ft	No change	No
505	N Weidler St	Intersection	57	1699 Vancouver St	Driveway	90 ft	Modified	To be modified and constructed
57	1699 Vancouver St	Driveway	58	1699 House driveway	Driveway	15 ft	Closed	proposed closure with redevelopment or with project implementation
58	1699 House driveway	Driveway	514	N Broadway	Intersection	90 ft	Closed	proposed closure with redevelopment or with project implementation
514	N Broadway	Intersection	519	N Tillamook St	Intersection	1000 ft	No change	No

Table 37. Westside N Center Street/Vancouver Ave

From			To			Distance Status		Affect of Proposed Concept
From ID #	Distance from	Type	To ID #	Distance to	Type	Approximate Distance	Status	
524	N Winning Way	Intersection	64	Parking Garage entranc	Driveway	191 ft	Modified	To be modified and constructed
64	Parking Garage entc	Driveway	537	N Vancouver Ave	Intersection	31 ft	No change	No
537	NE Wheeler Ave	Intersection	505	Weidler	Intersection	40 ft	No change	No
505	Weidler	Intersection	59	1699 Center Ct St	Driveway	141 ft	Modified	To be modified and constructed
59	1699 Center Ct St	Driveway	514	Broadway	Intersection	46 ft	Modified	To be modified and constructed
514	Broadway	Intersection	519	N Tillamook St	Intersection	1000 ft	No change	No

Figure 22. Eastside N Flint Ave



Table 38. Eastside N Flint Ave

From			To			Distance Status		Affect of Proposed Concept
From ID #	Distance from	Type	To ID #	Distance to	Type	Approximate Distance	Status	
525	N Winning Way	Intersection	92	1489 Flint Ave	Driveway	119 ft	No change	No
92	1489 Flint Ave	Driveway	93	NA	Driveway	41 ft	No change	No
93	NA	Driveway	507	Weidler	Intersection	104 ft	No change	No

Table 39. Westside N Flint Ave

From			To			Distance Status		Affect of Proposed Concept
From ID #	Distance from	Type	To ID #	Distance to	Type	Approximate Distance	Status	
525	N Winning Way	Intersection	65	garage entrance 1	Driveway	174 ft	No change	No
65	garage entrance 1	Driveway	66	garage entrance 2	Driveway	112 ft	No change	No
66	garage entrance 2	Driveway	507	Weidler	Intersection	148 ft	No change	No

Table 40.I-5 Northbound Interchanges

From	To	Approximate Distance	Affect of Proposed Concept
I-84	ramp NE Lloyd Blvd	902 ft	No
On ramp NE Lloyd Blvd	I-5 (approx Oregon St)	698 ft	No
I-5 (approx Oregon St)	NE Weidler ramp	1,172 ft	No
NE Weidler off ramp	NE Weidler St	814 ft	No
NE Weidler off ramp	Broadway On ramp	2,617 ft	No
Broadway On ramp	I-5	1413 ft	No
Broadway On ramp	Freemont Bridge Flyover	870 ft	No
Freemont Bridge Flyover	Off ramp Freemont Bridge	2,790 ft	No
off ramp Freemont Bridge	Off ramp to Greeley Ave	870 ft	No

Table 41.I-5 Southbound Interchanges

From	To	Approximate Distance	Affect of Proposed Concept
Freemont Bridge Flyover	Approx Knott St	2,110 ft	No
Greeley Ave on ramp	Freemont Bridge on ramp	1,105 ft	No
Freemont Bridge on ramp	N Broadway off ramp	1,715 ft	No
Mainline	N Broadway	1,110 ft	No
N Broadway off ramp	On ramp Weidler entrance ramp	2,525 ft	No
Weidler	I-5 Mainline	6,334 ft	No
Weidler on ramp	Off Ramp I-84 Flyover	1,184 ft	No
NE Oregon St	NE Grand Ave	2,762 ft	No